

Arrow guide



Pull



Push



Point



Twist

Preparation

Before you start

Preparation

1

Before following the user steps described in this user guide, please make sure to carefully read the information and disclaimers in the bottom of the last page. Please note that the information provided in this guide is not a substitute for professional medical advice or for reading the instructions for use (IFU) that comes with the infusion set.

The user steps for our comfort™ and comfort™ short infusion sets are identical.



Preparation

2

Wash your hands before inserting the infusion set.



Preparation

3

Choose an insertion site as recommended by your healthcare provider. **Do not** use an area right next to your previous infusion site.



Preparation

4

Clean the area for insertion with a disinfectant as directed by your healthcare provider. Be sure the area is air dry before inserting the infusion set.

Insertion



Insertion

5

Take the infusion set out of the sterile packaging.

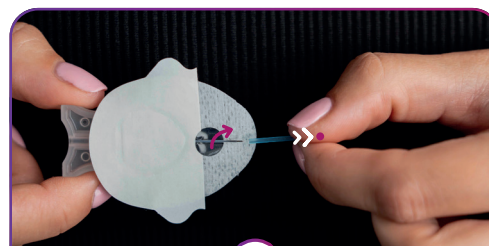
Caution
Ensure sterility by checking if the packaging is undamaged. Do not use if the infusion set is already open or has been damaged.



Insertion

6

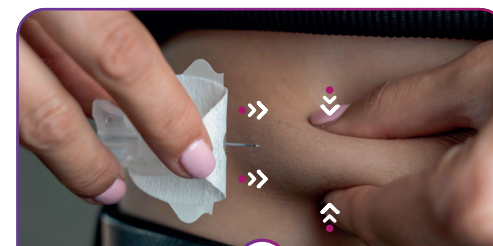
Gently remove the front paper from the adhesive tape.



Insertion

7

Gently twist and pull to remove the needle guard from the needle.



Insertion

8

Pinch the skin at the insertion site with one hand. Insert the infusion set at a 20–45-degree angle with the other.

Arrow guide



Pull



Push

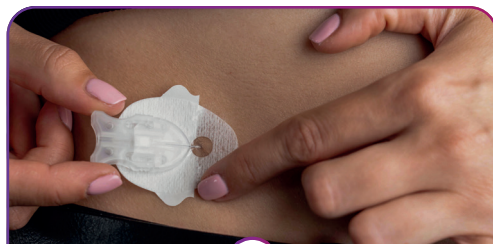


Point



Twist

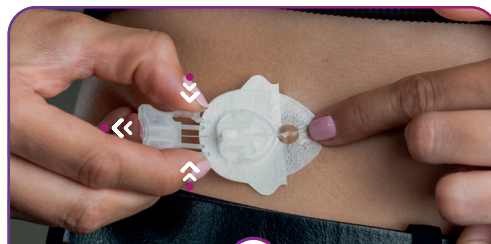
Insertion



Insertion

9

Gently massage the front part of the adhesive tape onto the skin.



Insertion

10

Place a finger in front of the cannula housing and gently remove the introducer needle by pressing on the grips on the side of the introducer needle and carefully pulling it straight out.



Insertion

11

Carefully remove the back paper from the adhesive tape. Avoid touching the adhesive tape.

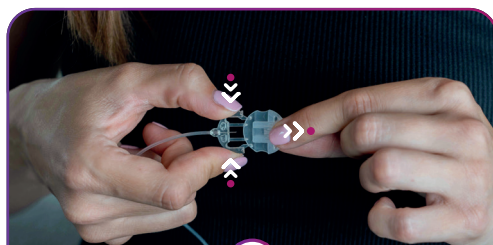


Insertion

12

Gently massage the adhesive tape onto the skin.

Insertion



Insertion

13

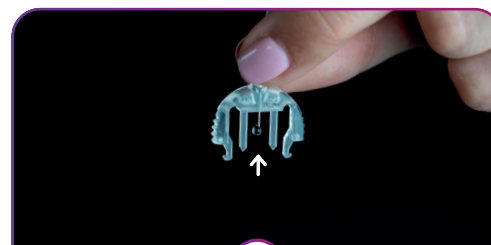
Remove the paper from the tubing and the circular protective cap from the connector needle.



Insertion

14

Follow your pump manufacturer's instructions for use to connect the infusion set tubing to the pump.



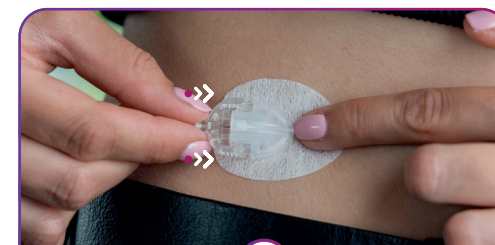
Insertion

15

Hold the infusion set with the needle pointing down. Prime the infusion set according to the instructions provided by the pump manufacturer until insulin dispenses from the needle. Ensure there are no air bubbles in the tubing.

Caution

Never fill the tubing while the infusion set is connected to your body.



Insertion

16

Place a finger in front of the cannula housing and push the connector needle straight in until you hear a "click".



Arrow guide



Pull



Push



Point



Twist

Insertion

Fill the empty space
in the cannula

Insertion

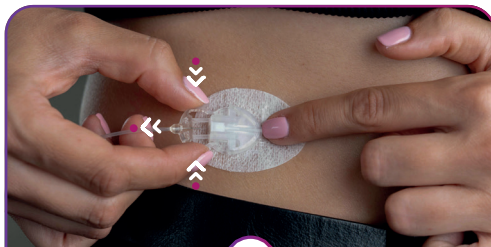
17

Fill the empty space in the cannula following your pump manufacturer's instructions.

⚠ Caution

Always check your blood glucose level one to three hours after insertion to ensure the infusion set is working properly. Measure your blood glucose on a regular basis. Discuss this with your healthcare provider.

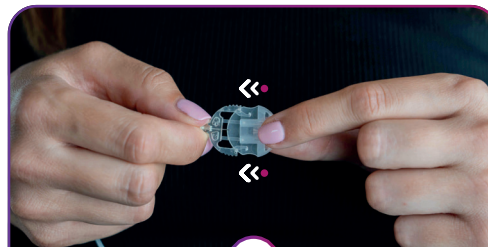
Disconnecting



Disconnecting

A

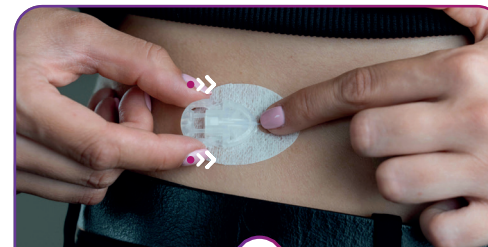
This infusion set allows you to temporarily disconnect from your pump. Place a finger just in front of the cannula housing and gently squeeze the sides of the connector needle. Pull the connector needle straight out.



Disconnecting

B

Connect the circular protective cap to the connector needle.



Disconnecting

C

Connect the disconnect cover to the cannula housing.

Arrow guide



Pull



Push

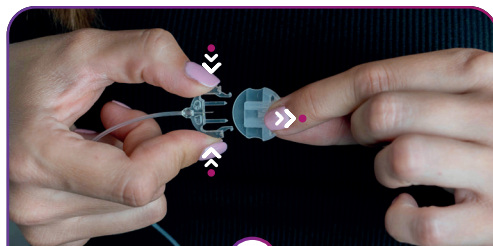


Point



Twist

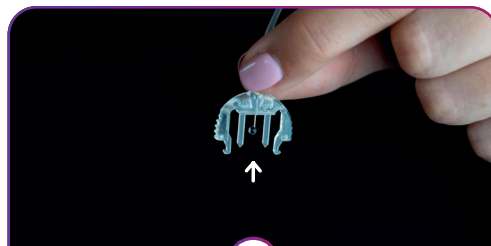
Reconnecting



Reconnecting

D

Before reconnecting the infusion set, make sure the adhesive still sits securely on the skin. Remove the circular protective cap from the connector needle.



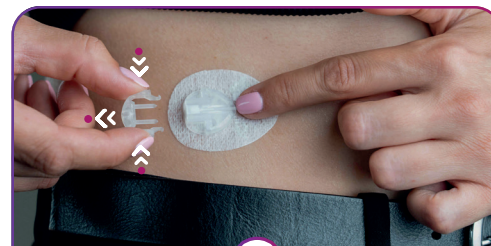
Reconnecting

E

Hold the infusion set with the needle pointing down. Prime the infusion set according to the instructions provided by the pump manufacturer until insulin dispenses from the needle. Ensure there are no air bubbles in the tubing.

⚠ Caution

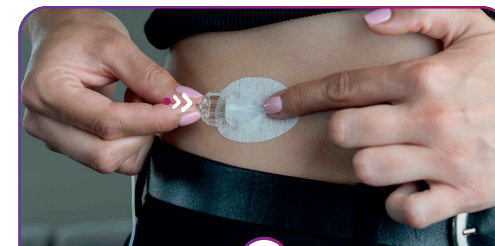
Never fill the tubing while the infusion set is connected to your body.



Reconnecting

F

Remove disconnect cover from the cannula housing.



Reconnecting

G

Place a finger in front of the cannula housing and push the connector needle straight in until you hear a "click".